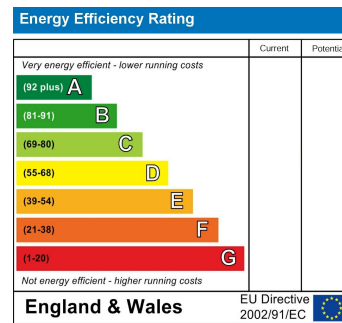
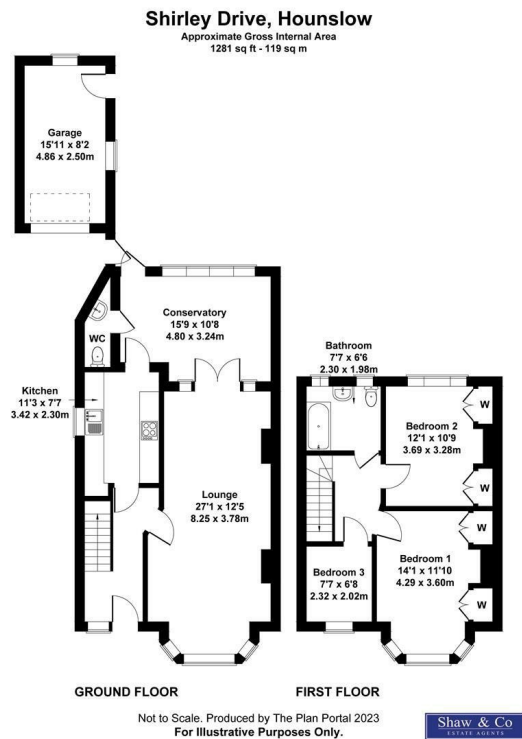




Shaw & Co
ESTATE AGENTS

£605,000
Shirley Drive
Hounslow, TW3 2HE

Shaw & Co



- Three Bedrooms
- Additional Ground Floor WC
- Chain Free
- Sought-After Residential Area
- Whitton/Hounslow Boarders
- Conservatory
- Garage and Off-Street Parking for 2 Cars
- Catchment area to St' Marks school

Agents Note: These particulars are for guidance only. All measurements area approximate and should be rechecked by buyers / tenants. While care has been taken to ensure accuracy, they should be solely relied upon.

OFFICE ADDRESS

Whitton
Twickenham
TW2 7LT

OFFICE DETAILS

0208 894 3646
whitton@shawandcoestates.com